

Berkshire

BY FOREST RIVER MOTORHOMES DIESEL DIVISION

LUXURY WITHIN REACH.





ERGONOMIC COCKPIT DESIGN READY FOR TAKE-OFF! (SHOWN WITH CARMEL INTERIOR)



- Wrap around cockpit with (9) gauge instrument cluster
- 4-Spoke VIP black steering wheel
- Telescopic/Tilt steering wheel
- 6-Way Flex-Steel Power Driver seat w/ 360 degree swivel and recliner
- Rear vision camera w/ hide-a-way monitor
- Jensen AM/FM/CD player w/ time display
- (4) pt. Fully automatic hydraulic leveling system
- Air and "city mode" horns
- Heated power side view mirrors
- (2) Defroster fans w/high and low settings
- Driver/Passenger map lights
- Side Vision Mirrors (Optional)
- Power Sun Visors (Optional)



3 90 T S

- 8 cubic foot refrigerator w/ ice maker & raised wood panels
- 3-burner recessed cook top with Corian cover
- Slide out pantry
- Solid maple or autumn cherry cabinet doors
- Brushed nickel cabinet hardware
- Convection/Microwave oven
- 60" x 80" island queen bed w/bedspread and decorative pillows
(Optional 72" X 80" King Bed Available)
- Bedside wardrobe w/shoe rack
- Dresser drawers and wardrobe type cabinets
- Overhead cabinets
- 19" LCD TV
- Fluorescent lighting
- Washer/Dryer prep
- Night stands
- Optional combination washer/dryer
- Optional stackable washer/dryer
(certain floor plans only)





390TS: MOCHA INTERIOR. AUTUMN CHERRY WOOD, FREE STANDING DINETTE





- (3) interior décor choices
- 84 inch interior ceiling height
- Soft touch padded ceiling
- Fluorescent lighting throughout
- Full length mirror
- 13,500 BTU low profile front roof A/C with heat pump and ceiling ducts with drain
- 3 Fantastic Fans through out
- Night shades
- Corian kitchen counter tops
- Twin sink basins with covers
- Wall border behind galley & sofa
- Full extension metal drawer guides w/ ball bearings throughout
- Optional solid wood, free standing dinette with 4 chairs
- Booth dinette with retractable table top & drawers underneath
- Hide-a-bed sofa
- Love seat sofa w/ jack knife bed
- Contoured overhead cabinets in slide out rooms
- Optional dual pane, dark tint windows (including (2) exit windows)
- Optional Side View Cameras
- Optional Power Sun Visors



A



B



C



D

- A. SIDE HINGED STORAGE COMPARTMENTS
- B. 7.5 DIESEL GENERATOR W/ SLIDE TRAY
- C. WATER MANAGEMENT CENTER
- D. ELECTRICAL COMPARTMENT

BERKSHIRE STANDARDS & OPTIONS

CHASSIS-FREIGHTLINER XC RAISED

RAIL CHASSIS: STANDARDS

ENGINE

- Cummins ISB turbo diesel
- 6.7 liter
- 340 HP @ 1600 RPM
- 660Ft. Lbs. Torque @ 1600 RPM

BRAKES

- Full air w/auto slack adjuster
- ABS
- Exhaust Brake

TRANSMISSION

- Allison 2500MH
- 6 Speed automatic w/lock up
- Electric push button shift
- Transynd transmission fluid

SUSPENSION

- Neway air suspension front and rear
- Sachs custom tuned shock absorbers
- Heavy duty stabilizer bar
- 55 degree wheel cut
- 1" beam suspension w/bell crank
- Air suspension deflation system

TIRES

- Michelin XRV 255/80R/22.5

WHEELS

- (4) Stainless Steel Simulators

COOLING SYSTEM

- Cross flow, rear mounted radiator

- Transmission oil cooler
- 5 year / 100,000 mile coolant (some maintenance required)

STEERING WHEEL

- 4-Spoke VIP black steering wheel
- Electronic cruise control w/high idle
- Telescopic/Tilt steering wheel

OTHER CHASSIS STANDARDS

- 100 Gallon, dual fill fuel tank
- LCD engine message center
- Day time running lights
- 7-Pin tow power connector
- 18.7 CFM air compressor
- Farr Eco-air cleaner
- Air filter restriction indicator
- Fuel/water separator
- Haldex purest heated air dryer
- Automatic, heated moisture ejectors
- Power steering
- Washer/wiper w/intermittent function
- Leece-Neville 160 amp alternator
- (2) 950 CCA @ 0° F, maintenance free batteries on slide tray

CHASSIS OPTIONS

- Cummins ISB turbo diesel
- 6.7 liter
- 350 HP @ 1800 RPM
- 750 Ft. Lbs. Torque @1800 RPM
- Allison 3000MH 6-speed transmission
- 10,000 lb receiver hitch

WHEELS OPTIONS

- (4) Polished aluminum
- (2) Steel on inside rear axle
- 22.5 x 8.25

STRUCTURAL STANDARDS

- Steel basement construction
- Automotive & foam seal undercoating
- Vacuum bonded floor
- Tubular aluminum frame
- Structure wood flooring
- 2 lb. Density, block foam polystyrene insulation
- Vacuum bonded sidewalls
- Tubular aluminum frame
- 2 lb. Density, block foam polystyrene insulation
- Gel-coated fiberglass skin
- Crowned and layered vacuum bonded roof
- Fiberglass roof
- Tubular aluminum frame
- 2 lb. Density, block foam polystyrene insulation
- Channeled drains for AC's
- Steel firewall with 2 lb. Density, block foam polystyrene insulation
- Tubular steel front bulkhead
- Fiberglass front and rear caps
- 84 inch interior ceiling height
- Full Body automotive paint
- Front mask protective film
- Side-hinged exterior compartment doors w/ full pass through storage

EXTERIOR STANDARDS

- (4) pt. Fully automatic hydraulic leveling system
- 7.5 Guardian Diesel Generator w/ full slide tray
- 1200 Watt inverter/converter
- (4) Six volt house batteries on slide tray
- (2) Master electric shut off switches
- 50 Amp 120V distribution panel and detachable cord
- Electrical panel w/lighted indicators for fuses
- Individual zoned manifold water supply system
- Variable speed constant pressure water pump
- All coach water filtration system (FO)
- 13,500 BTU low profile front roof A/C with heat pump and ceiling ducts with drain
- 13,500 BTU low profile rear roof A/C with heat pump and ceiling ducts with drain
- 40,000 BTU furnace
- 10 Gallon Gas/Electric water heater w/DSI
- 24.5 Gallon propane tank
- Black water tank flush system
- Power entrance step
- Patio light
- Lighted entry assist handle
- Front entrance door w/screen and deadbolt
- Power front door awning
- Deluxe power patio awning w/remote
- Slide out room awnings
- Full length drip and awning rail
- 5,000 lb receiver hitch
- Basement TV Coax w/ 110V recept
- Air and "city mode" horns
- Heated power side view mirrors
- TV antenna w/signal booster
- Shower skylight
- Docking lights

- Heated blankets for all water & holding tanks
- Full length mud flap w/chrome trim
- (2) Piece rear ladder
- Auxillary LP Hook-Up-Passenger Side
- Auxillary Air Chuck-Front Firewall

EXTERIOR OPTIONS

- Full Body automotive paint with painted graphics
- 8.0 Onan Diesel Generator w/ full slide tray
- 2000 Watt inverter/converter
- Dual pane, dark tint windows (including (2) exit windows)
- Slide out storage trays

DRIVER/PASSENGER AREA STANDARDS

- Wrap around cockpit with (9) gauge instrument cluster
- LCD engine message center
- 4-Spoke VIP black steering wheel
- Telescopic/Tilt steering wheel
- 6-Way Power Driver seat w/ 360 degree swivel and recliner
- Passenger seat w/ 360 degree swivel and recliner
- Vinyl w/carpeted floor mat for driver
- Hide-away steel framed step cover
- Lighted step well
- Rear vision camera w/ hide-a-way monitor
- Jensen AM/FM/CD player w/ time display
- Sirius satellite radio capable
- DVD player
- Home theatre surround sound w/bass woofer and mid range tweeter
- (8) Stereo speakers throughout coach

- 32" LCD color TV
- Satellite TV prep
- Distribution control box for entertainment electronics
- (2) Defroster fans w/high and low settings
- Remote generator start switch
- Auxiliary start switch
- Driver/Passenger map lights
- Driver/Passenger cup holders
- Automotive dash AC/heater w/deluxe controls
- Electronic battery disconnect switch
- Wrap around lined privacy curtain

DRIVER/PASSENGER AREA OPTIONS

- "Soft Touch" 6-Way Power Driver seat w/ 360 degree swivel and recliner
- "Soft Touch" Passenger seat w/ 360 degree swivel and recliner
- Side View Cameras
- Power Sun Visors

LIVING/DINING/GALLEY STANDARDS

- (3) interior décor choices
- Booth dinette with retractable table top & drawers underneath
- Hide-a-bed sofa
- Love seat sofa w/ jack knife bed
- Solid maple or Autumn cherry cabinet doors
- Oil Rubbed Bronze cabinet hardware
- Contoured overhead cabinets in slide out rooms
- Vinyl floor in entryway, galley and bathroom area
- Carpeted living room and dining area
- Fluorescent lighting throughout
- Full length mirror

- Soft touch padded ceiling
- Fantastic fan in galley area
- Night shades
- Metal blinds in galley window
- Corian kitchen counter tops
- Twin sink basins with covers
- Wall border behind galley & sofa
- Slide out pantry
- Full extension metal drawer guides w/ ball bearings throughout
- Single lever faucet
- Convection/Microwave oven
- 8 cubic foot refrigerator w/ ice maker & raised wood panels
- 3-burner recessed cook top with Corian cover

LIVING/DINING/GALLEY OPTIONS

- Lockable 4' counter extension in galley with drawers and pantry – (NA 360 QS)
- 12 Cubic foot, side by side, stainless steel refrigerator with ice maker (deletes pantry)
- 3-Burner recessed cook top with oven (NA on 360 QS)
- Autumn cherry or maple cabinet doors
- Solid wood, free standing dinette with 4 chairs
- "Soft Touch" hide-a-bed sofa
- "Soft Touch" love seat w/ jack knife bed

BATH AREA STANDARDS

- Vinyl floor throughout
- Extra large lavvy bowl sink
- Double lever lavatory faucets
- One piece fiberglass shower with glass door
- Porcelain china toilet
- Mirrored medicine cabinets
- Towel bars

- Metal blinds in lavatory window
- Fantastic fan in bathroom & lavvy area

BEDROOM AREA STANDARDS

- 60"x 80" island queen bed w/bedspread and decorative pillows
- Bedside wardrobe w/shoe rack
- Dresser drawers and wardrobe type cabinets
- Overhead cabinets
- 19" LCD TV
- Fluorescent lighting
- Individual reading lights
- Washer/Dryer prep
- Carpet with padding
- Night stands
- Egress window

BEDROOM AREA OPTIONS

- Combination washer/dryer
- Stackable washer/dryer (certain floor plans only)
- (2) Flip Down LCD Monitors with AV Input and (2) Wireless Headphones (390BH Model Only)
- (2) DVD Players in Bunkhouse (390BH Model Only)
- King Bed 72in. x 80in. (390 TS Model Only)

SAFETY STANDARDS

- 110 GFI protected circuits (galley, bath and basement)
- Carbon monoxide detector
- LP gas detector
- Smoke alarm
- Surface mounted fire extinguisher

BERKSHIRE SPECIFICATIONS

MOCHA



CARMEL



PEARL



FLOORPLANS	360QS	390TS	390QS	390BH
Interior Height	84"	84"	84"	84"
Interior Width	95.5"	95.5"	95.5"	95.5"
Exterior Height w/satellite	12'5"	12'5"	12'5"	12'5"
w/o satellite	12'3"	12'3"	12'3"	12'3"
Exterior Length w/rear ladder	37'9"	39'9"	39'9"	39'9"
w/o rear ladder	37'3"	39'3"	39'3"	39'3"
Exterior width	100"	100"	100"	100"
Wheel base	228"	252"	252"	252"
GVWR (lbs.)	28K	28K	28K	28K
GAWR front (lbs.)	10.5K	10.5K	10.5K	10.5K
GAWR rear (lbs.)	17.5K	17.5K	17.5K	17.5K
GCWR (lbs.)	33K	33K	33K	33K

LIQUID MEASURES

* Black water tank ~ 44 Gallons, * Grey water tank ~ 60 Gallons, * Fresh water tank ~ 86 Gallons,
 * Water Heater ~ 10 Gallons, * LP Tank ~ 24.50 Gallons, * Fuel Capacity ~ 100 Gallons

EXTERIOR PAINT STANDARDS



TAN EXTERIOR



CHARCOAL RED EXTERIOR



SILVER EXTERIOR

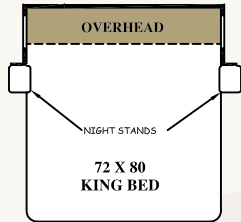


The XC Chassis by Freightliner Custom Chassis Corporation (FCCC). Offering a smooth ride and precise handling characteristics, the XC chassis provides a supreme driving experience for customers. And with the industry-leading wheel cut, the XC chassis is the most maneuverable chassis in the RV diesel pusher market. The Berkshire comes standard with the following XC configuration:

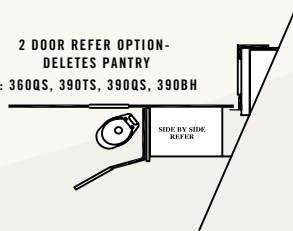
- Raised Rail, Rear Radiator offers increased basement storage space and continuous 9" steel frame rails that minimize coach stress.
- I-Beam Front Suspension is engineered to increase stability, decrease body roll and provide the ultimate in ride quality.

BERKSHIRE OPTIONS

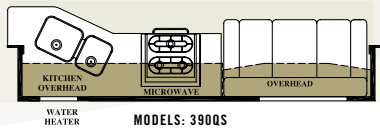
KING BED OPTION
390 TS ONLY



2 DOOR REFER OPTION - DELETES PANTRY
MODELS: 360QS, 390TS, 390QS, 390BH

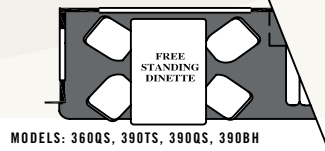


SOFA OPTION



MODELS: 390QS

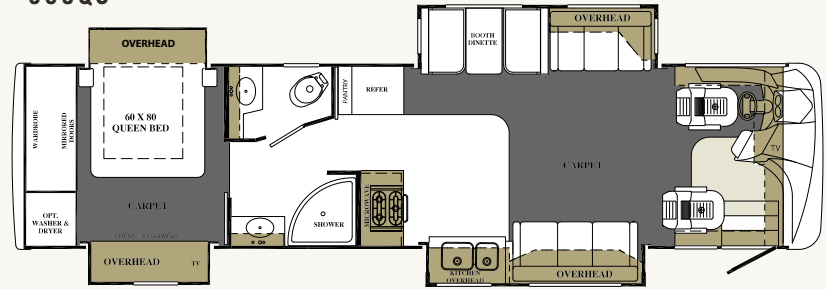
FREE STANDING DINETTE OPTION



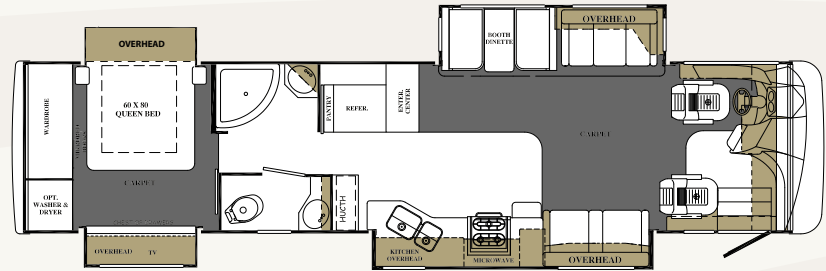
MODELS: 360QS, 390TS, 390QS, 390BH

BERKSHIRE FLOORPLANS

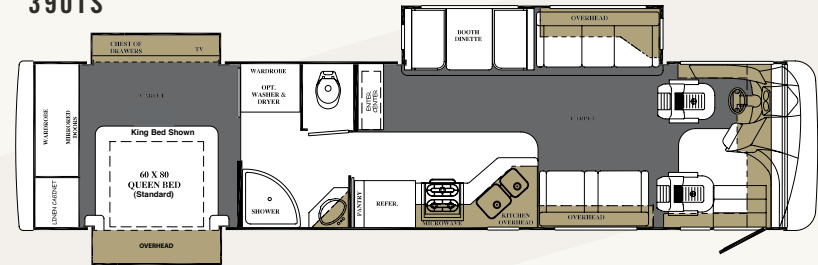
360QS



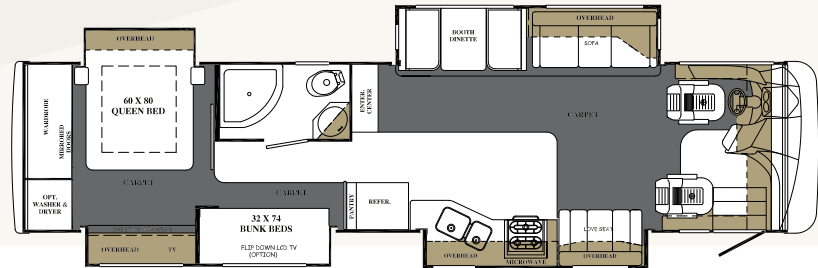
390QS



390TS



390BH





Forest River has yet another exclusive feature to offer: One year of free roadside assistance will be given to every 2008 Berkshire customer. This is just one more way to say "Thank you" and to ensure an enjoyable traveling experience.

To Find Your Local Dealer Visit: www.ForestRiverInc.com



All illustrations and specifications contained in this literature are based on the latest product information at time of publication. Forest River reserves the right to make changes in prices, colors, materials, equipment and specifications at anytime without notice and assumes no responsibility for any error in this literature. All units are shipped F.O.B. Goshen, Indiana.

CONSULT YOUR LOCAL DEALER FOR WARRANTY INFORMATION.

